

Temperature and Humidity Datalogger

User Manual

Thank you for purchasing the Data Logging Temperature and Humidity Datalogger. We recommend that you read and carefully follow the manual before use.

Introduction:

This device is 4in1 meter which can measure and record temperature, humidity, dew point temperature and heat Index .. widely be applied in the industries of medics, food, agriculture, laboratory, electronics, air-conditioning, weather service, archives management, fibre manufacturing and cold chain logistics.

Features:

- * Large LCD display with Backlight
- * Temperature and humidity measurement and recording function
- * Temperature unit: °C or °F optional
- * Record interval: 1s~24hour adjustable
- * Max/Min reading recorder
- * Data Hold function
- * Data logging(8,0000 datas, each function with 2,0000datas) and download datas via software
- * Setting alarm function(via software)
- * LED lights indication.
- * Time display
- * Low battery indicator
- * Power on and Auto power off function

Specifications:

Temperature Range: -40 to 105°C (-40 to 221°F)

Accuracy: $\pm 1^{\circ}\text{C}/^{\circ}\text{F}$

Humidity Measurement Range: 0%-100%

Accuracy: $\pm 3\%$

Heat index range: 21.1 to 54.4 °C (70 to 130°F)

Dew Point Temperature Range: -40 to 105°C (-40 to 221°F)

Operation temperature: -30 to 80°C (-22 to 176°F)

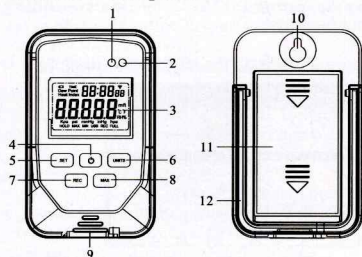
Operation humidity: 0 to 90%RH

Storage temperature: 0 to 40°C (32 to 104°F)

Storage humidity: 0 to 75%RH

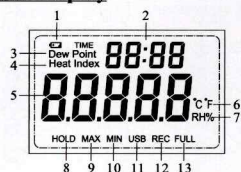
Resolution:0.1°C/°F;1%RH
 Size:55*90*35mm
 Weight:90g(included AA1.5V x 2pcs batteries)

Product Description



- 1.Alarm lamp
- 2.Recording lamp
- 3.LCD display
- 4.Power on/off button
- 5.Set button
- 6.Units button
- 7.Rec button
- 8.Max button
- 9.USB socket
- 10.Hanging hole
- 11.Battery cover
- 12.Stand

LCD Display



- 1.Low power symbol
- 2.Time reading
- 3.Dew point mode
- 4.Heat index mode
- 5.Reading
- 6.Temperature units
- 7.Humidity unit
- 8.Hold mode
- 9.Max reading mode
- 10.Min reading mode
- 11.USB connecting symbol
- 12.Rec symbol
- 13.Full symbol

Buttons and Operation

1.Power on/off Button

- a.press this button to turn on the meter
- b.press this button above 2 seconds to turn off the meter

2.Set Button

Press this button to switch below modes:

- a.temperature reading
- b.humidity reading
- c.Dew point reading
- d.Heat index reading

3.Unit Button

- a.Press this button to switch unit °C and °F
- b.Press this button over 2 seconds to turn on/off backlight

4.Max Button

- a.press this button to display the max reading or min reading
- b.press this button over 2 seconds to hold the display contents

5.Rec Button

Press this button:The Rec icon will appear on screen. The meter will now begin logging the temperature and humidity . This will only function after the parameters have been set via software

(AttentionThe meter will continue to record until you turn the meter off, the meter memory reaches full capacity or the batteries run out.

Each new recording will require the meter to be reconnected to the PC, so the parameters can be reset.

TheAuto off feature is disabled in Recording mode)

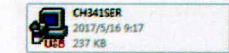
6.Software installing

This software only can be applied to Windows 2000 ,windows XP, windows 7, windows 8 and windows10 operation system.

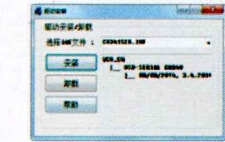
1.Open the CD and see below icons (CH341SER and setup):



2.double-click below icon (CH341SER):

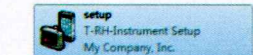


3.The interface as follows:

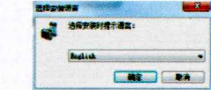


4.Click "Install" and wait for about 1 minutes to finish installation.

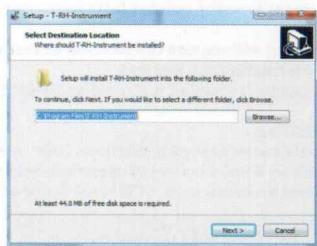
5.Then double- click below icon:



6.Show below interface, Choose the language, then Click “OK”



Then click "next" to complete installation



How to use Data-Logger ?

1. Open the software, the interface show as below, then connect



2. Using the USB cable connect device to computer, then click "connect" to show "connected to the device:OK.", show below interface.

(Attention: if not connected, try to close anti-virus software in PC and check the USB cable have problem or not)

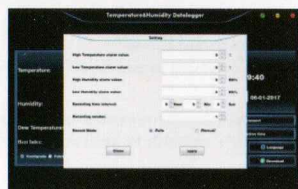


3. After online connection, click" calibration time" to update the current time.

Attention: (the user from different countries must calibrate the time after connection, the update time will be same as the computer time)



4. Click "set" then enter into below interface to set parameter



5. Setting all of the parameter as user's request. The setting function included: High/low temperature Alarm, High/Low humidity Alarm. Record interval time : from 1s~24Hours; record times : from 1~20000; record mode: manual or Auto model.

a"Auto" recording function means that when you select the recording mode as "Auto", click "apply", the meter will start recording immediately

b. "Manual" recording function means that when the record mode is "Manual", click "apply" will not immediately record, you need to manually press the instrument "REC" will start recording

6. Download datas:

After finished recording, click "download" show below picture



7. Click top right corner "export" could export datas to be "Excel" and "TXT" format (see below excel file picture)

```
Report
>>Start Time:11-03-2017 21:45:47
>>End Time:11-03-2017 21:47:27
>>Temp Alarm HI: 100.0°C Temp Alarm Low: 0.0°C
>>RH Alarm HI: 86 %RH RH Alarm Low: 0 %RH
>>Sampling rate: 5 sec
>>Data number: 20
>>Temp MIN: 20.9°C @11-03-2017 21:45:52 Temp MAX: 21.2°C @11-03-2017 21:47:22
>>RH MIN: 67.5%RH @11-03-2017 21:45:52 RH MAX: 72.4%RH @11-03-2017 21:47:22
```

NO	time	temperature(c)	humidity	Heat-Index(c)	Dew-Temperatur
0001	11-03-2017 21:45:52	20.9	70.6	20.9	15.4
0002	11-03-2017 21:45:57	20.9	71.0	20.9	15.4
0003	11-03-2017 21:46:02	20.9	71.3	20.9	15.5
0004	11-03-2017 21:46:07	20.9	71.6	20.9	15.6
0005	11-03-2017 21:46:12	21.0	72.4	21.0	15.8
0006	11-03-2017 21:46:17	21.0	72.2	21.0	15.8
0007	11-03-2017 21:46:22	21.0	71.6	21.0	15.7
0008	11-03-2017 21:46:27	21.0	70.4	21.0	15.4
0009	11-03-2017 21:46:32	21.0	70.3	21.0	15.4
0010	11-03-2017 21:46:37	21.0	71.1	21.0	15.6
0011	11-03-2017 21:46:42	21.1	71.4	21.1	15.7
0012	11-03-2017 21:46:47	21.1	69.0	21.1	15.2
0013	11-03-2017 21:46:52	21.1	67.8	21.1	14.9
0014	11-03-2017 21:46:57	21.1	70.1	21.1	15.4
0015	11-03-2017 21:47:02	21.1	71.6	21.1	15.8
0016	11-03-2017 21:47:07	21.1	71.1	21.1	15.7
0017	11-03-2017 21:47:12	21.1	71.1	21.1	15.7
0018	11-03-2017 21:47:17	21.1	71.2	21.1	15.7
0019	11-03-2017 21:47:22	21.2	70.7	21.2	15.7
0020	11-03-2017 21:47:27	21.2	70.8	21.2	15.7

Battery Replacement

If the meter does not power on as usual or the low battery appears on the LCD display, please replace the battery as possible. Press down and push the battery cover down per the arrows indicate and insert 2pcs new AA 1.5V replace the battery cover.

Dispose of the old batteries in an environmentally safe manner at a recycling point.

DO NOT DISPOSE OF IN YOUR BIN!

Operating Precautions:

1. The meter should be placed upright. If placed in low and high humidity environment, after measurement, should be placed upright until vaporizing is completely reading the data in the device.
2. If meter is connected to the PC, some battery power will be consumed.
3. Any stored data will be permanently erased when the meter is reset. To enable you to save this data before it is lost, Cancel and then you need to download data.
4. Always ensure that the remaining charge in the battery is sufficient to last the complete duration of your logging. If in doubt, we recommend that you always install a fresh battery before logging critical data.

Trouble Shooting:

1. Power on but no display or the display disappears
a. Check the battery is in place with good contact to the correct way round.
2. Replace the battery.
3. For all other issues please contact your supplier.

Warranty:

This meter has a one year warranty for a period of one year date of purchase. This warranty covers normal operation and does not cover (including leaks), misuse, abuse, alteration, tampering, improper maintenance or improper calibration. Nor can it be used as an excuse for a false claim simply because changed your mind after the initial 14 day period. Proof of purchase is required for warranty repairs.